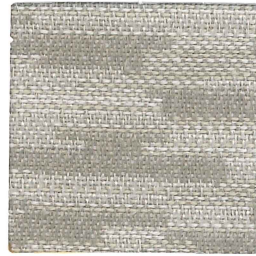


Boothby



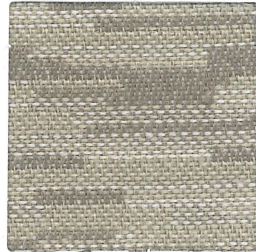
Whitecap



Luna



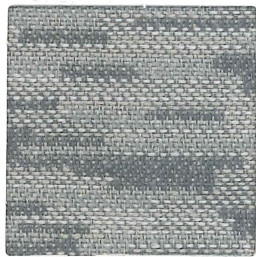
Jalapeno



Marble



Herb



Glacier



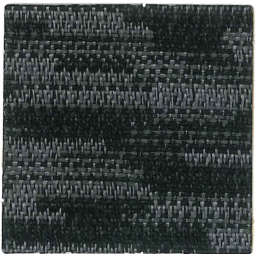
Bisbee



Nickel



Cerulean



Castlerock



Blazer

Boothby

| | |
|----------------------|---|
| Content: | 100% Polyester |
| Backing: | Synthetic latex blend |
| Weight: | 11.5 oz. per linear yard |
| Width: | 54" |
| Abrasion: | Heavy Duty - Exceeds 100,000 Cycles (Wyzenbeek - Cotton Duck Abradant) (ASTM D4157) |
| Light Fastness: | Class 4/40 hrs. min. (AATCC16A) |
| Color Fastness: | Class 3 (ASTM D 3597,AATCC 8) Wet Class 4 (ASTM D 3597,AATCC 8) Dry |
| Physical Properties: | Class 3 (ASTM D3511) Brush Pill 207 lbs. warp, 178 lbs. weft (ASTM D 5034) Breaking Strength 64 lbs. warp, 57 lbs. weft (ASTM D 4034) Seam Slippage |
| Passes: | California Tech. Bulletin #117-2013 UFAC Class I NFPA 260 Class I |
| Cleanability: | W - Water based cleaners may be used |

This fabric is made in China.

CULP
CONTRACT

For samples or further information, please contact:
Culp, Inc.
Contract Fabrics
1823 Eastchester Drive
High Point, NC 27265
Phone: (336)-889-5161
Fax: (336)-899-7848
www.culpcontract.com

10-9-2019