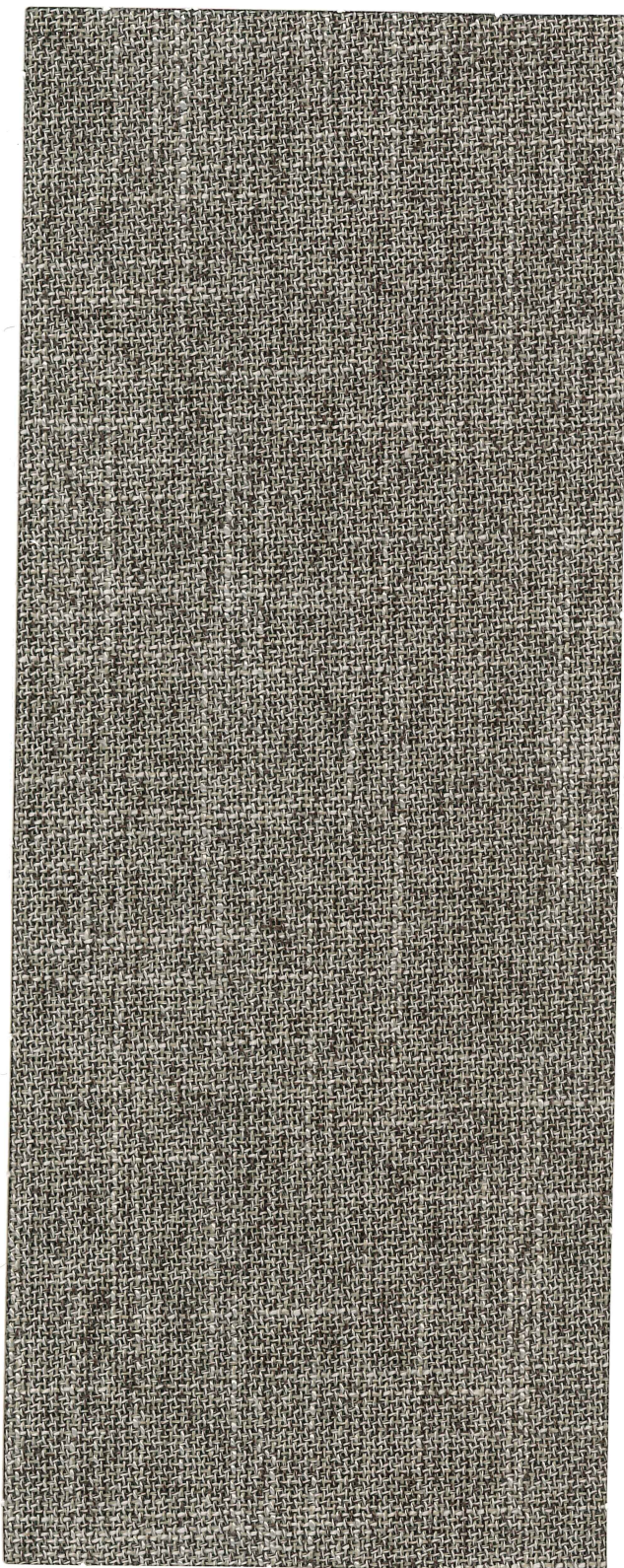


# Archetype



Quartz



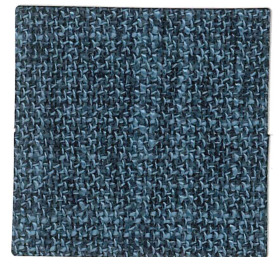
Hemp



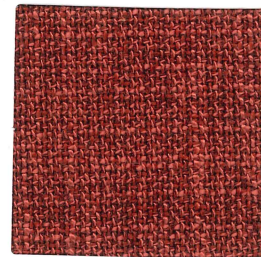
Herbal



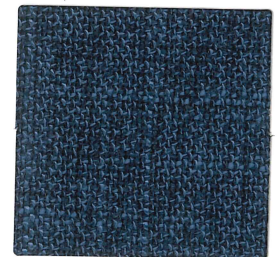
Bourbon



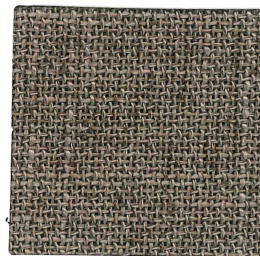
Anchor



Vermilion



Admiral



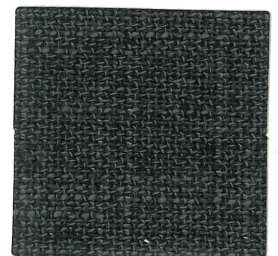
Silt



Blackberry



Café



Smoke

## Archetype

Content:	79% Polyester, 21% Rayon
Backing:	100% Polyester
Finish:	i-clean - a high performance stain, and moisture repellent, based on Nano technology
Weight:	9.0 oz. per linear yard
Width:	54"
Abrasion:	Heavy Duty - Exceeds 70,000 Cycles (Wyzenbeek - #10 Cotton Duck Abradant) (ASTM D4157)
Light Fastness:	Class 4/40 hrs. min. (AATCC16A)
Color Fastness:	Class 3 (ASTM D 3597,AATCC 8) Wet Class 4 (ASTM D 3597,AATCC 8) Dry
Physical Properties:	Class 4 (ASTM D3511) Brush Pill 152 lbs. warp, 116 lbs. weft (ASTM D 5034) Breaking Strength 52 lbs. warp, 55 lbs. weft (ASTM D 4034) Seam Slippage
Passes:	California Tech. Bulletin #117-2013 UFAC Class I NFPA 260 Class I
Cleanability:	W - Water based cleaners may be used

This fabric is made in China.

Samples are Railroaded

For samples or further information, please contact:

Culp, Inc.  
Contract Fabrics  
1823 Eastchester Drive  
High Point, NC 27265  
Phone: (336)-889-5161  
Fax: (336)-899-7848  
[www.culpcontract.com](http://www.culpcontract.com)

**CULP**  
CONTRACT

6-15-2017