

Critic's Choice



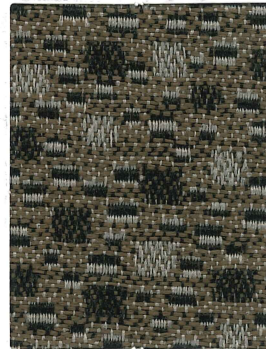
Cocoa



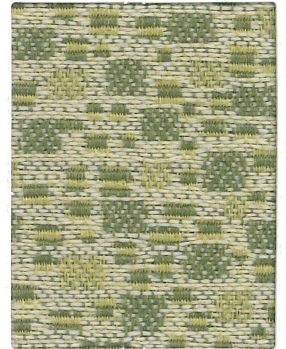
Tussah



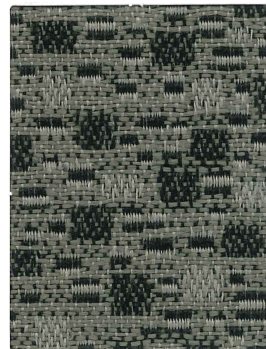
Silver



Tabby Cat



Sprout



Cinder



Lake



Iron



Raspberry

## Critic's Choice

Content:	54% Polyester, 46% Repreve® Recycled Polyester
Backing:	Synthetic latex blend
Weight:	12.2 oz. per linear yard
Width:	54"
Abrasion:	Heavy Duty - Exceeds 30,000 Cycles (Wyzenbeek - #10 Cotton Duck Abradant) (ASTM D4157)
Light Fastness:	Class 4/40 hrs. min. (AATCC 16A)
Color Fastness:	Class 4 (ASTM D3597, AATCC 8) Wet Class 4 (ASTM D3597, AATCC 8) Dry
Physical Properties:	Class 4 (ASTM D3511) Brush Pill 84 lbs. warp, 90 lbs. weft (ASTM D5034) Breaking Strength 61 lbs. warp, 65 lbs. weft (ASTM D4034) Seam Slippage
Passes:	California Tech. Bulletin #117 - 2013 UFAC Class I NFPA 260 Class I
Cleanability:	W - Water based cleaners may be used.

Critic's Choice® is a copyright design by Culp, Inc.

This fabric is made in China.

For samples or further information, please contact:  
Culp, Inc.

Contract Fabrics  
1823 Eastchester Drive  
High Point, NC 27265  
Phone: (336)-889-5161  
Fax: (336)-899-7848  
[www.culpcontract.com](http://www.culpcontract.com)

**CULP**  
CONTRACT

REPREVE®  
RECYCLED FIBER BY UNIFI

3-9-2016