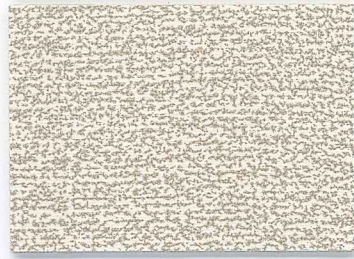
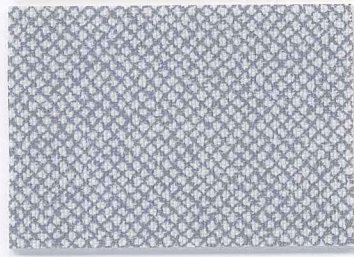


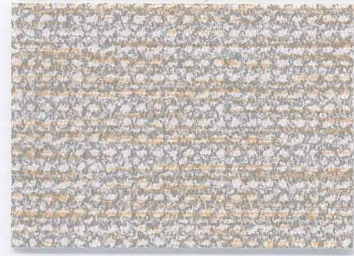
Sanya CV
Arctic



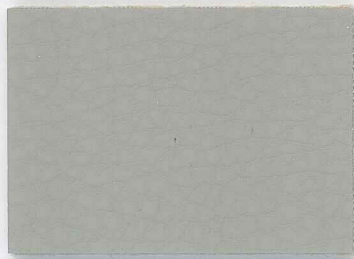
Mixer EPU
Sugar



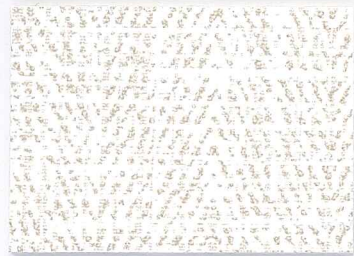
Tribeca CV
Cloud



Keeper CV
Antique



Artisanal EPU
Lunar



Twill EPU
Moonstone



Flax



Pumice



Camel



Espresso



Root



Hearth



Oak



Ash



Brushed Tan



Rose Suede



Wheat



Silver Mist



Clay



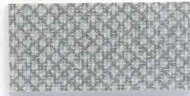
Dusk



Ice Blue



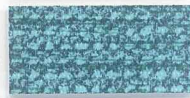
Sunset



Mica



Amber



Pool



Woodland



Taupe



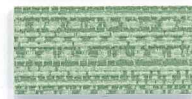
Mulberry



Mojave Tan



Salt Rock



Fern



Iron



Clover



Vermillion



Lichen



Mariner



Palm



Poppy



Fog



Navy



Jade



Sedona



Nickel



Sable



Tidal



Basalt



Cascade



Slate



Lake



Charcoal



Blue Grass



Onyx



Blueberry



Carbon

COATED PERFORMANCE

ALLIANCE

Pattern - width	Content	Finish	Durability	Color Fastness	Repeat	Maintenance
Artisanal EPU - 54" ☞ ▲ ✨ 🌿 ☆ *	100% EPU Polyurethane		500,000 double rubs	Class 4.5 200 hours		WS BC (10:1)
Keeper CV - 54" ☞ ▲ ✨ 🌿 ☆ *	100% Clean Vinyl/Phthalate Free	Protective Overcoat	200,000 double rubs	Class 4 200 hours	54" V, 18" H	WS BC (10:1)
Mixer EPU - 54" ☞ ▲ ✨ 🌿 ☆ *	100% EPU Polyurethane		130,000 double rubs	Class 4.5 200 hours		WS BC (4:1)
Sanya CV - 54" ☞ ▲ ✨ 🌿 ☆ *	100% Clean Vinyl/Phthalate Free	Protective Overcoat	220,000 double rubs	Class 5 200 hours	19" V, 14 3/4" H	WS BC (10:1)
Tribeca CV - 54" ☞ ▲ ✨ 🌿 ☆ *	100% Clean Vinyl/Phthalate Free	Protective Overcoat	100,000 double rubs	Class 4 200 hours		W BC (10:1)
Twill EPU - 54" ☞ ▲ ✨ 🌿 ☆ *	100% EPU Polyurethane		130,000 double rubs	Class 4.5 200 hours		WS BC (4:1)



GREENGUARD certified.
CA Section 01350 compliant
Eligible for CHPS Low-Emitting
Material Credits



Search for fabrics by
approved cleaners



Find hundreds of pre-approved,
in grade and in stock fabrics
in 5 simple steps

* ACT® Registered Certification Marks

These fabrics when used with proper components are compatible with California Technical Bulletin 133

Multiple factors affect fabric durability and appearance retention, including end-user application and proper maintenance

Abrasion test results exceeding ACT Performance Guidelines are not an indicator of product lifespan

Cleaning Code Definition

- W: Water-based foam or cleaner
- WS: Clean with water-based cleaning agents or foam
- BC: Bleach Cleanable

Visit momentumtextilesandwalls.com to view full pattern repeat and complete specs

©2024

08991251



MomentumTextilesAndWalls.com | 800.366.6839

MOMENTUM
TEXTILES & WALLCOVERING



Ego Foil



Dove



Ginger



Spa



Galena



Jade



Twig



Midnight



Onyx



Nestle Mineral



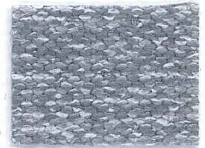
Almond



Mesa



Cascade



Nickel



Grove



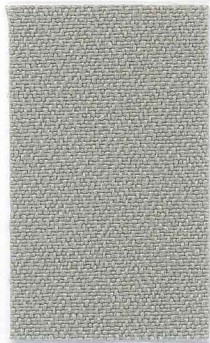
Mink



Eve



Pepper



Crespo Pumice



Slate



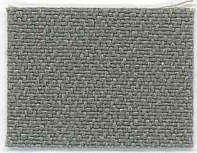
Spice



River



Bayou



Basalt



Pinot



Navy



Maestro



Scatter Baltic



Fossil



Garnet



Spruce



Flint



Pewter



Barley



Caspian



Noir



Carson CV Sterling



Bluff



Stone



Airy



Graphite



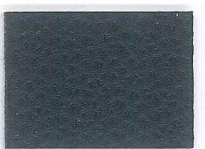
Sage



Buck



Indigo



Shadow

KICKSTART ALLIANCE

Pattern - width	Fiber content	Finish	Abrasion	Lightfastness	Approx. Repeat	Cleaning code
Carson CV - 54" * ACT® * * * *	100% Clean Vinyl/Phthalate Free	Protective Overcoat	500,000 double rubs	Class 4.5 200 hours		W BC (10:1)
Ego - 54" * ACT® * * * *	85% Polyester, 15% Viscose Rayon		250,000 double rubs	Class 4 40 hours		WS
Nestle - 54" * ACT® * * * *	67% Polyester, 33% Post Consumer Recycled Polyester		200,000 double rubs	Class 5 40 hours		WS
Scatter - 54" * ACT® * * * *	78% Polyester, 22% Post Consumer Recycled Polyester		90,000 double rubs	Class 4.5 40 hours		WS
Crespo - 54" * ACT® * * * *	100% Post Consumer Recycled Polyester		500,000 double rubs	Class 4 40 hours		WS



GREENGUARD certified.
CA Section 01350 compliant
Eligible for CHPS Low-Emitting
Material Credits



Search for fabrics by
approved cleaners



Find hundreds of pre-approved,
in grade and in stock fabrics
in 5 simple steps

* ACT® Registered Certification Marks

These fabrics when used with proper components are compatible with California Technical Bulletin 133

Multiple factors affect fabric durability and appearance retention, including end-user application and proper maintenance

Abrasion test results exceeding ACT Performance Guidelines are not an indicator of product lifespan

Cleaning Code Definition

- W: Water-based foam or cleaner
- WS: Clean with water-based cleaning agents or foam
- BC: Bleach Cleanable

Visit momentumtextilesandwalls.com to view full pattern repeat and complete specs

©2023

08999621



MomentumTextilesAndWalls.com | 800.366.6839

MOMENTUM
TEXTILES & WALLCOVERING

Momentum

Coated Performance Alliance

PATTERN	DPC GRADE
ARTISANAL EPU	GR. 13 + \$20 LIST
KEEPER CV	GR. 13 + \$30 LIST
MIXER EPU	GR. 13 + \$20 LIST
SANYA CV	GR. 13 + \$30 LIST
TRIBECA CV	GR. 13 + \$30 LIST
TWILL EPU	GR. 13 + \$20 LIST

*** Note: Pricing is per yard**