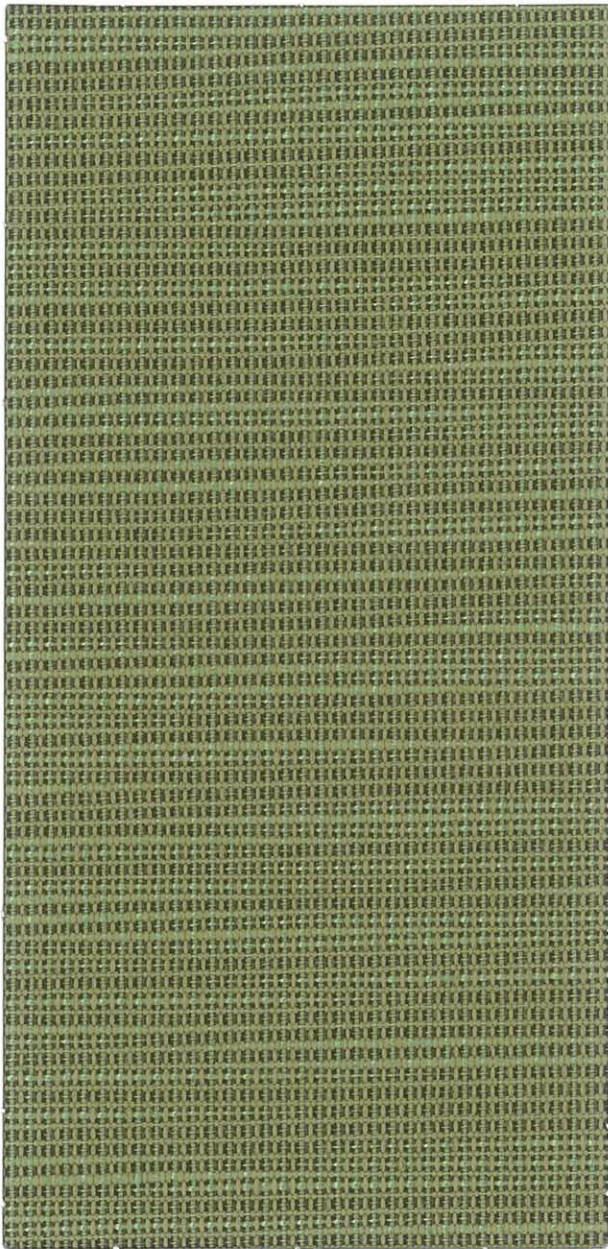


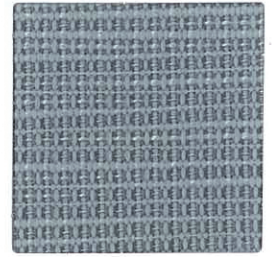
Ridgecrest



Meadow



Beach



Tide Pool



Bittersweet



Meadow



Ruby



Sterling



Taupe



Midnight



Putty



Mink



Chocolate



Ink

Ridgecrest

| | |
|----------------------|---|
| Content: | 100% Polyester |
| Backing: | Acrylic |
| Weight: | 12.96 oz. per linear yard |
| Width: | 54" |
| Abrasion: | Heavy Duty - Exceeds 100,000 Cycles (Wyzenbeek - #10 Cotton duck Abradant) (ASTM D 4157) |
| Light Fastness: | Class 4/40 hrs. min. (AATCC I 6A) |
| Color Fastness: | Class 4 (ASTM D3597, AATCC 8) Wet Class 5 (ASTM D3597, AATCC 8) Dry |
| Physical Properties: | Class 4 (ASTM D3511) Brush Pill 80 lbs. warp, 68 lbs. weft (ASTM D4034) Breaking Strength 84 lbs. warp, 72 lbs. weft (ASTM D4034) Seam Slippage |
| Passes: | California Tech. Bulletin #117 Section E (CS-191-53) UFAC Class I |
| Cleanability: | W - Water based cleaners may be used. |

This fabric is made in the USA.

For samples or further information, please contact:
Culp, Inc.
Contract Fabrics
1823 Eastchester Drive
High Point, NC 27265
Phone: (336)-889-5161
Fax: (336)-889-7848
www.culpcontract.com

CULP
CONTRACT

12-12-2013