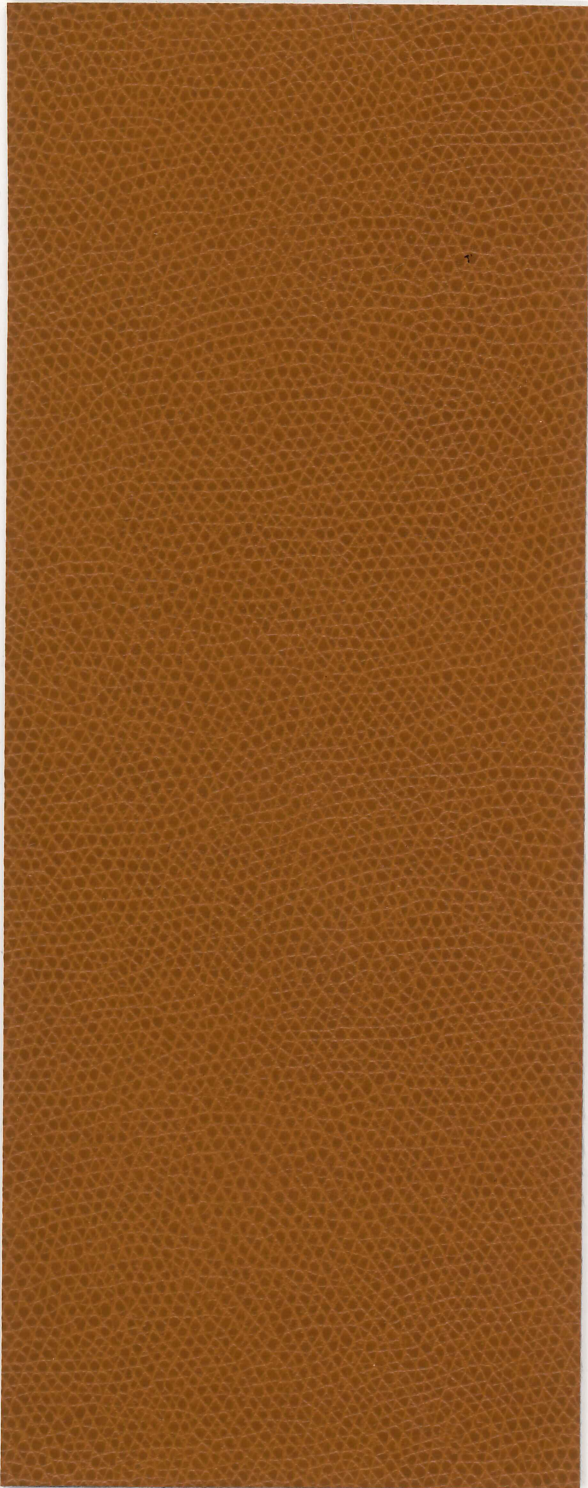


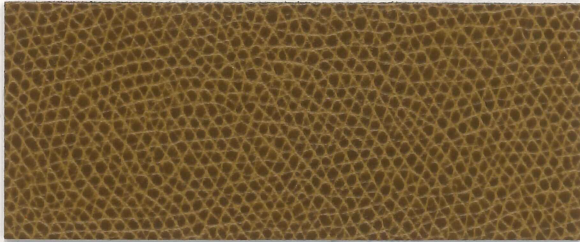
Rushmore



Copper



Flaxen



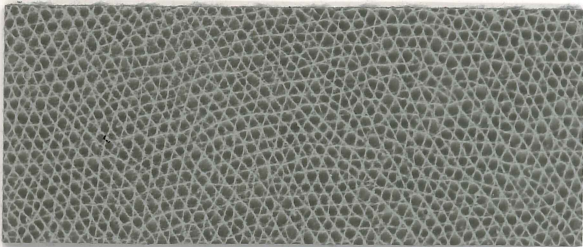
Teak



Bella



Silver



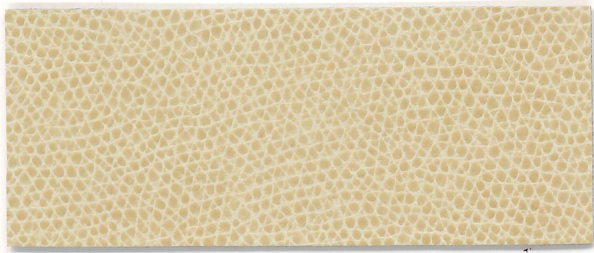
Silt



Grotto



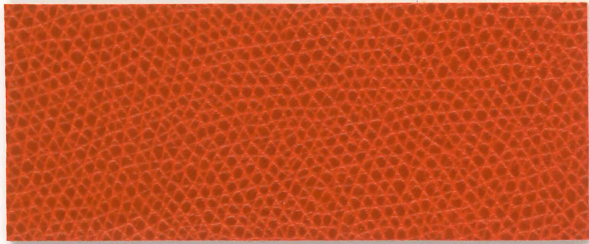
Gray



Parchment



Sassy



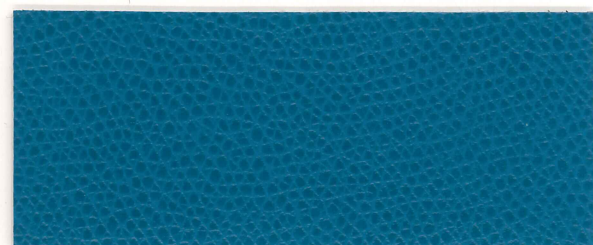
Carrot



Emerald



Berry



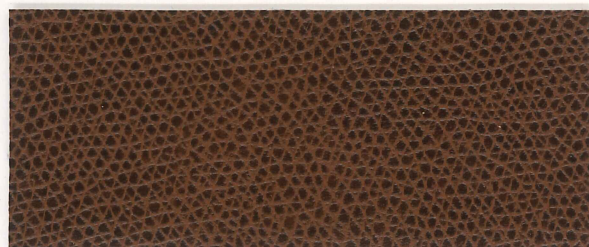
Aquamarine



Pepper



Cobalt



Brown



Blueberry



Saddle



Raven

Rushmore

Content:	100% Polyurethane
Backing:	70% Polyester, 30% Cotton
Finish:	i-clean™ - a high performance stain and moisture repellent, based on Nano technology. Antimicrobial
Weight:	20.3 oz. per linear yard
Width:	54"
Abrasion:	Heavy Duty - Exceeds 200,000 Cycles (Wire Screen Abradant) (ASTM D415-07)
Light Fastness:	Class 4/200 hrs. min. (AATCCI6A)
Color Fastness:	Class 4 (ASTM D3597, AATCC8) Wet Class 4 (ASTM D3597, AATCC8) Dry
Physical Properties:	Class 4 (ASTM D3511) Brush Pill 98 lbs. warp, 83 lbs. weft (ASTM D5034) Breaking Strength 84 lbs. warp, 85 lbs. weft (ASTM D4034) Seam Slippage 50,000 cycles (CFFA 10) Flex Resistance Pass (CFFA 6a) Cold Crack Pass (ISO 1419) 5 weeks
Passes:	California Tech. Bulletin #117 - 2013 UFAC Class I NFPA 260 Class I MVSS 302 Pass
Cleanability:	WS - Both water and solvent based solutions Bleach Cleanable -5:1 water/bleach solution

This fabric is made in China

For samples or further information, please contact:
Culp, Inc.
Contract Fabrics
1823 Eastchester Drive
High Point, NC 27265
Phone: (336) 889-5161 • Fax: (336) 899-7848
www.culpcontract.com

CULP
CONTRACT

06-05-2018