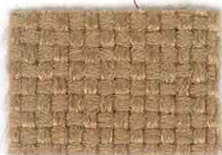


YELLOW • GOLD • BRONZE

The color of intelligence, a cerebral left brain stimulant that aids in clear thinking and communications. As yellow moves towards gold, it is the color that symbolizes higher wisdom, hope and inner radiance.



Sherpa Amber



Shire Nectar



Shire Marigold (IN)



Shire Acorn



Shire Phoenix (New!)

ORANGE • RUST • COPPER

A powerful color that implies enthusiasm and opportunity. Optimistic, energetic and non-conforming, it is in tune with world culture. Bright oranges work perfectly for artistic accent, while softer and muted variations are comforting and complement wood finishes.



Shire Marmalade (New!)



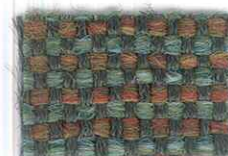
Shire Paradise (New!)



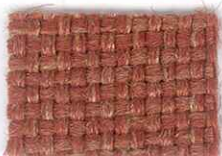
Shire Copper Clay (New!)



Shire Tigerlily



Shire Grassland



Sherpa Snappy (New!)



Shire Peachland (New!)



Shire Citrus (New!)



Shire Serengeti (New!)



Shire Garden



Sherpa Sparkler



Shire Adobe Orange (New!)



Sherpa Autumn (IN)



Shire Bricktown (IN)



Shire Caramel (New!)

RED • BURGUNDY • BERRY

A pick me up color that calls for action. Bold, passionate, powerful, loving and charitable, it is an energetic color that communicates strength and confidence. Pink and mauve are more relaxed and nurturing.



Sherpa Cardinal (IN)



Sherpa Scarlet (IN)



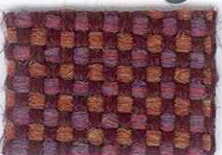
Sherpa Mauve



Shire Ascot (IN)



Shire Oxford



Shire Tulip (New!)



Shire Red Rose (IN)



Sherpa Rosewood



Shire Aristocrat



Shire Black Cherry



Sherpa Garnet



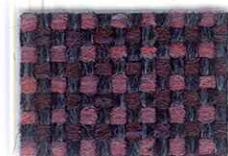
Sherpa Maroon (IN)



Sherpa Newport



Shire Country (IN)



Shire Berry Blue (New!)

GREEN • SAGE • JADE • HUNTER

This is the color of hope, evoking feelings of renewal and growth. It is the most healing color... the center of the spectrum, representing balance. Light yellow green is imbued with the optimism of new growth, and darker green signifies maturity.



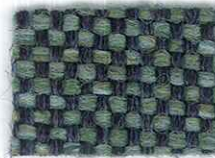
Sherpa Leap Frog (New!)



Shire Dill (New!)



Shire Sage (New!)



Shire Waterfall (New!)



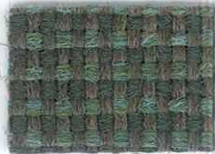
Shire Pine



Shire Key Lime (New!)



Shire Cammo (New!)



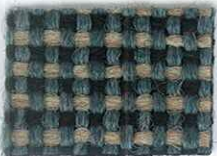
Shire Patina (IN)



Shire Pesto



Sherpa Jade



Shire Heath



Shire Limelight (New!)



Sherpa Moss



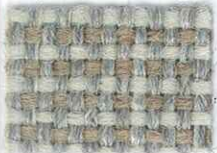
Sherpa Hunter



Sherpa Billiard (IN)

NEUTRAL • BROWN • TAUPE • GREY • CHARCOAL

Neutrals are infused with complex and intricate sensibilities. They encompass a vast range of perceptions... simple, sincere and stable, they are also strong and virtuous, complementing all colors of the spectrum.



Shire Travertine (New!)



Sherpa Grey Mix



Shire Sesame (IN)



Shire Fossil (IN)



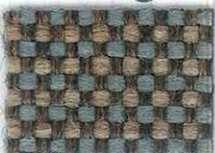
Sherpa Grey Heather (IN)



Shire Canvas (New!)



Shire Greystone



Shire Woodstock (New!)



Shire Hopsack (IN)



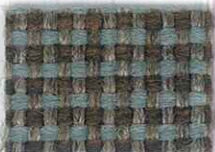
Shire Black Marble (IN)



Sherpa Brown Haze (IN)



Sherpa Gargoyle



Shire Horizon (New!)



Shire Stonewall (New!)



Shire Aqueduct



Shire Blair Brown (New!)



Sherpa Mocha (New!)



Shire Koala (IN)



Shire Espresso (IN)



Shire Stable (New!)



Sherpa Coffee (New!)



Shire Bison



Sherpa Clove



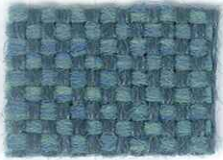
Sherpa Mahogany



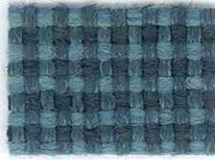
Sherpa Black (IN)

BLUE GREEN • TEAL

Immersed in a sense of peacefulness, blue greens convey tranquility and serenity, ideal for calm and restful environments. Brighter tones are lighthearted and playful, while deeper tones are more soulful and pensive.



Shire Spa Blue (New!)



Shire Turquoise (New!)



Sherpa Teal (Old but New!)



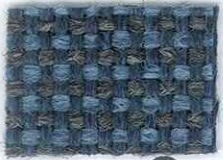
Shire Tahoe Blue (New!)



Sherpa Ivy League

BLUE • NAVY

Beloved for its friendly nature, it conveys the expansive nature of the sky. Light blues are sweet and celestial, midtones are crisp and soothing, and deep blues convey power, security, friendliness and trust.



Shire Steel Blue (IN)



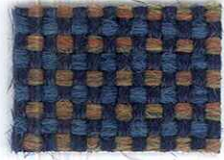
Sherpa Denim



Shire Tuscan Blue



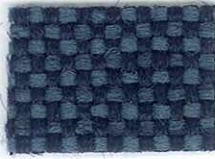
Shire Titan Blue (IN)



Shire Cordon Bleu



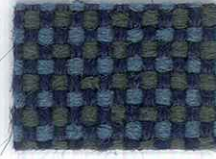
Sherpa Academy (IN)



Shire Chesapeake (New!)



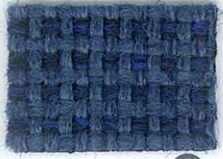
Sherpa Hudson Bay



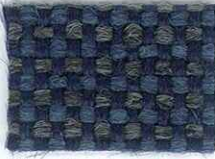
Shire Potomac (New!)



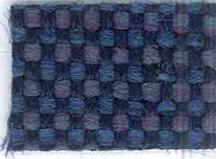
Shire Mariner



Shire Commodore (IN)



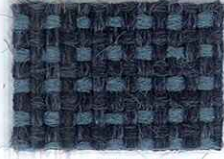
Shire Merrimac (New!)



Shire Lobelia



Shire Gettysburg (New!)



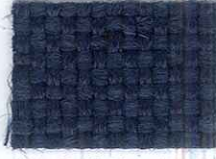
Shire Levi Blue (New!)



Shire Midnight



Sherpa Indigo (IN)



Shire Delft Blue (New!)



Shire Ink (IN)



Sherpa Keydet Blue (New!)



Sherpa Royal (IN)



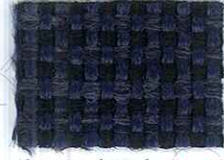
Sherpa Dark Blue (IN)



Sherpa Special Blue



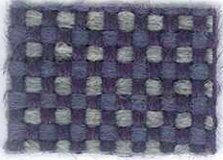
Sherpa Navy (IN)



Shire Dark Night (New!)

PURPLE • VIOLET • PLUM

Brings a sense of inner calm and feelings of contentment and inspiration. Violet is the color of knowledge, self respect, dignity and wealth. Softer tones are sweet, serene and unpretentious. Deeper tones are exciting, sophisticated and passionate.



Shire Grey Lilac



Sherpa Viola



Sherpa Purple Velvet



Sherpa Concord



Sherpa Grape (IN)

Sherpa & Shire UPHOLSTERY FABRIC

LL* Patterns are covered by a limited lifetime performance warranty. Contact your sales representative for written warranty terms and conditions.

TECHNICAL INFORMATION

Fiber: 100% Polyolefin

Backing | Finish: Acrylic

A Abrasion Resistance: 250,000 double rubs (wire screen)

Weight: 16.0 ounces per linear yard (± 1 oz.); 494 g/m

Width: 54" (137-140 cm)

Repeat: None (Pattern is woven up the roll and suitable for railroading)

***** Lightfastness: 400 Hours, Class 5

♥ Colorfastness: Wet - Class 5 | Dry - Class 5

★ Seam Slippage: Warp - 91 lbs | Fill - 95 lbs.

Cleaning Instructions: WS - For water-based stains, use mild detergent foam or upholstery shampoo. For oil based stains, spot clean fabric with a dry cleaning solvent, being sure to test area first.

🔥 Flame Resistance: California Technical Bulletin 117, Section E; CS-191-53, Class 1; BIFMA X5.7-1991; UFAC, Class 1; B. S. 5852 Part 1: 1979 Ignition Source 0, smoldering cigarette.

Fabrics by Absecon Mills, Inc. Fabric performance symbols indicate that a fabric performs to commercial furniture manufacturing standards and passes all applicable testing as specified by the Association for Contract Textiles (ACT).

10/2012 | For additional cards or memo samples:

email samples@aanddstyle.com



Absecon Mills is focused on being a responsible corporate entity and we are continually striving to find ways to help preserve our environment, increase energy efficiency and reduce waste. Our mode of manufacturing is specifically designed to prevent damage to the environment. Our products are woven using wind power and many are constructed with polypropylene (a by-product of gasoline manufacturing, utilizing post-industrial waste) and recycled polyester, which helps keep post-consumer waste in the material stream and out of landfills. Absecon offers finishes that use ten times less fluorocarbons than conventional finishes and are SCS Indoor Advantage Gold certified. We participate in a fabric recycling program and work hard to lessen our footprint on the environment. For more information on our green initiatives, please visit www.absecon.com.



WOVEN WITH WIND POWER

Colors may vary slightly from dye lot to dye lot.

