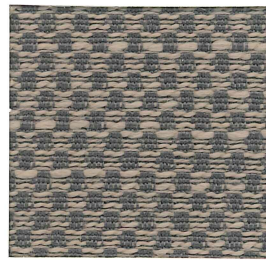




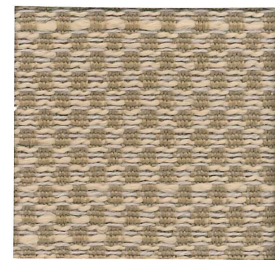
Tome



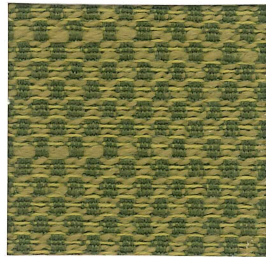
Charcoal



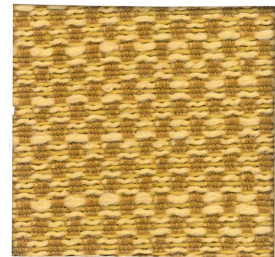
Forge



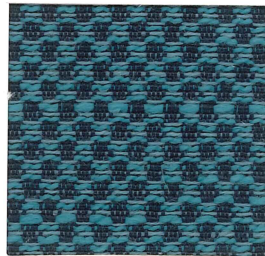
Sisal



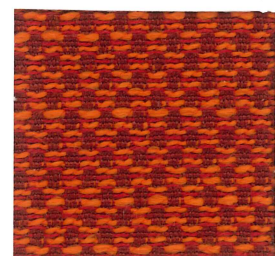
Sorrel



Sundance



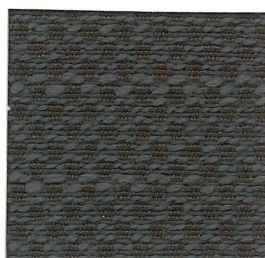
Jewel



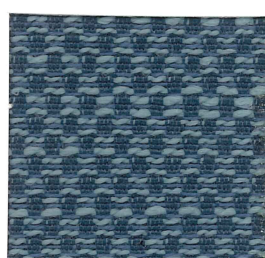
Poppy



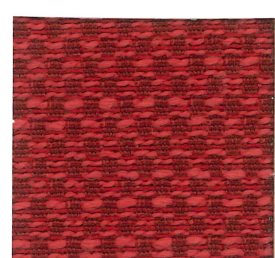
Heirloom



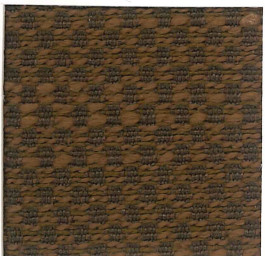
Sepia



Pool



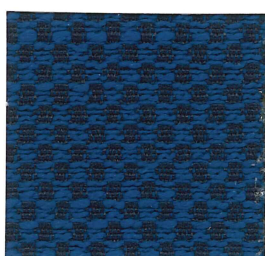
Scarlet



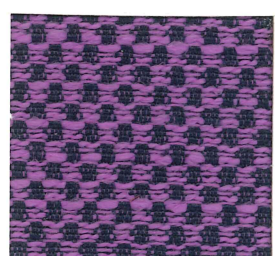
Walnut



Pueblo



Sapphire



Sugarplum

Tome

Content:	100% Polyester
Backing:	Synthetic latex blend
Finish:	i-clean™ - a high performance stain and moisture repellent, based on Nano technology.
Weight:	10.61 oz. per linear yard
Width:	54"
Abrasion:	Heavy Duty - 95,000 Cycles (Wyzenbeek - Cotton Duck Abradant) (ASTM D4157)
Light Fastness:	Class 4/40 hrs. min. (AATCC 16A)
Color Fastness:	Class 3 (ASTM D3597, AATCC 8) Wet Class 4 (ASTM D3597, AATCC 8) Dry
Physical Properties:	Class 4 (ASTM D3511) Brush Pill 238 lbs. warp, 228 lbs. weft (ASTM D5034) Breaking Strength 68 lbs. warp, 48 lbs. weft (ASTM D4034) Seam Slippage
Passes:	California Tech. Bulletin #117-2013 UFAC Class I NFPA 260 Class I
Cleanability:	W - Water based cleaners may be used.

This fabric is made in China

For samples or further information, please contact:

Culp, Inc.
Contract Fabrics
1823 Eastchester Drive
High Point, NC 27265
Phone: (336)-889-5161
Fax: (336)-899-7848
www.culpcontract.com

CULP
CONTRACT

11-29-2017