

Truman



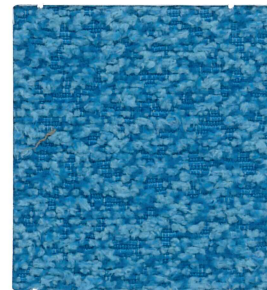
Oat



Lemongrass



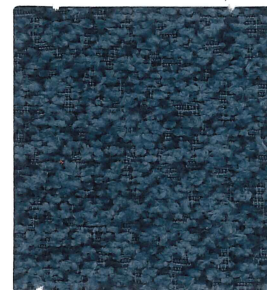
Tangerine



Electric Blue



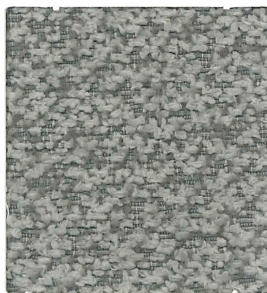
Ruby



Lapis



Grape



Smoke



Dove



Navy



Marsh



Soot



Stone



Charcoal



Molasses

Truman

Content:	98% Polyester, 2% Nylon
Backing:	Synthetic Latex Blend
Finish:	i-clean™, a high performance stain and moisture repellent, based on Nano technology.
Weight:	12.5 oz. per linear yard
Width:	54"
Abrasion:	Heavy Duty – 95,000 Cycles (Wyzenbeek – Cotton Duck Abradant) (ASTM D4157)
Light Fastness:	Class 4/40 hrs. min. (AATCC16A)
Color Fastness:	Class 3 (ASTM D3597, AATCC8) Wet Class 4 (ASTM D3597, AATCC8) Dry
Physical Properties:	Class 4 (ASTM D3511) Brush Pill 198 lbs. warp, 55 lbs. weft (ASTM D5034) Breaking Strength 102 lbs. warp, 52 lbs. weft (ASTM D4034) Seam Slippage
Passes:	California Tech. Bulletin #117-2013 UFAC Class I NFPA 260 Class I
Cleanability:	W – Water based cleaners may be used.

This fabric is made in China.

CULP
CONTRACT

For samples or further information, please contact:
Culp, Inc.
Contract Fabrics
1823 Eastchester Drive
High Point, NC 27265
Phone: (336) 889-5161 • Fax: (336) 899-7848
www.culpcontract.com

5-01-2018