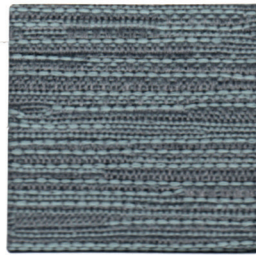


Winslow



Fudge



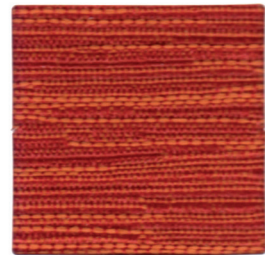
Smoke Blue



Cashew



Blue Chip



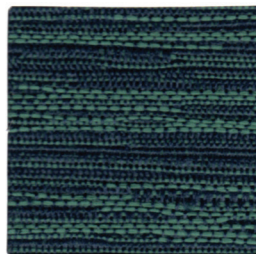
Blaze



Belize



Fudge



Peacock



Deep Red



Mineral



Jet

Winslow

Content: 100% Polyester
Backing: Acrylic
Weight: 11.2 oz. per linear yard
Width: 54"

Performance

Abrasion: Heavy Duty - Exceeds 40,000 Cycles
(Wyzenbeeck - #10 Cotton Duck Abradant) (ASTM D415-07)
Light Fastness: Class 4/100 hrs. min. (AATCC16A)
Color Fastness: Class 4 (ASTM D3597, AATCC8) Wet
Class 4 (ASTM D3597, AATCC8) Dry
Physical Properties: Class 4 (ASTM D3511) Brush Pill
106 lbs. warp, 87 lbs. weft (ASTM D4034) Breaking Strength
74 lbs. warp, 49 lbs. weft (ASTM D4034) Seam Slippage
15 lbs. warp, 28 lbs. weft (ASTM2261 D-96) Tear Strength

Flammability

Passes: California Tech. Bulletin #117 Section E (CS-191-53)
UFAC Class 1

Care

Cleanability: W - Water based cleaners may be used.

Winslow is a copyrighted© design by Culp, Inc.

This fabric is made in China.

For samples or further information, please contact:

Culp, Inc.
Contract Fabrics
1823 Easchester Drive
High Point, NC 27265
336-889-5161

